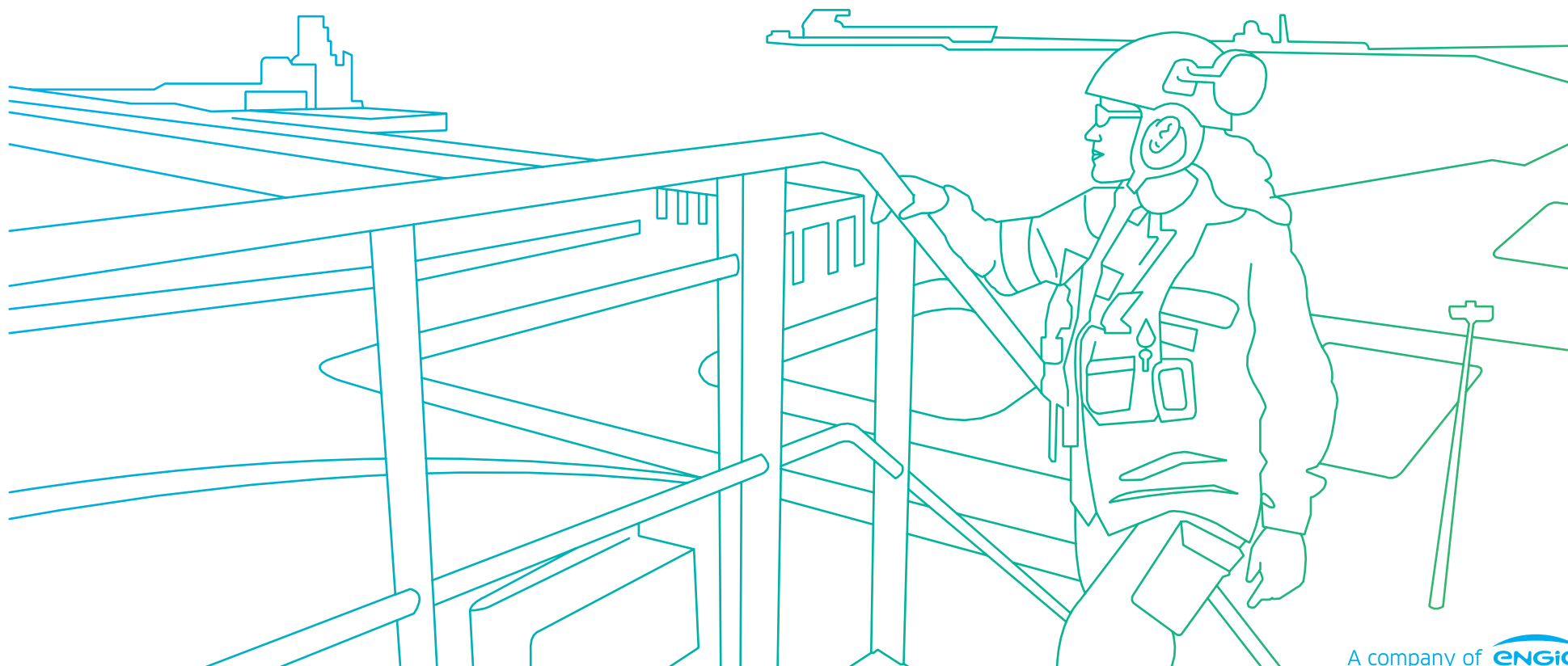


TARIFFS APPLICABLE AS OF 1ST APRIL 2023

French regulated LNG terminals

Scheduling flexibility, competitive tariffs, access to both Mediterranean and Atlantic shores



Fos Cavaou

	SMART			SPOT*(last minute booking)		
	€	€/MWh	\$/MMBtu	€	€/MWh	\$/MMBtu
Unloading (Med-Max)	753 000	1,51	0,49	590 000	1,18	0,38
Unloading (standard cargo)	1 406 000	1,41	0,45	1 080 000	1,08	0,35
with POOLING from Montoir**	N/A			503 100	0,50	0,16
Unloading (Q-Flex)	1 928 400	1,38	0,44	1 472 000	1,05	0,34
Unloading (Q-Max)	2 320 200	1,36	0,44	1 766 000	1,04	0,33
Ship Reloading (standard cargo)	544 000	0,54	0,18	N/A		
Truck Loading	636 €(2023) / loading					
Small Scale LNG carrier reloading	Non-regulated activity - quotation upon request					

Ship or Pay: 100% of the reservation.

Nota: Resulting terminalling tariffs excludes Gas Taken off, Port fees, Transmission network tariff (cf. GRTgaz).

Dollar price is indicative, based on:

- 1€ = 1,1 \$
- 1,00 €/MWh = approx. 0,32 \$/MMBtu

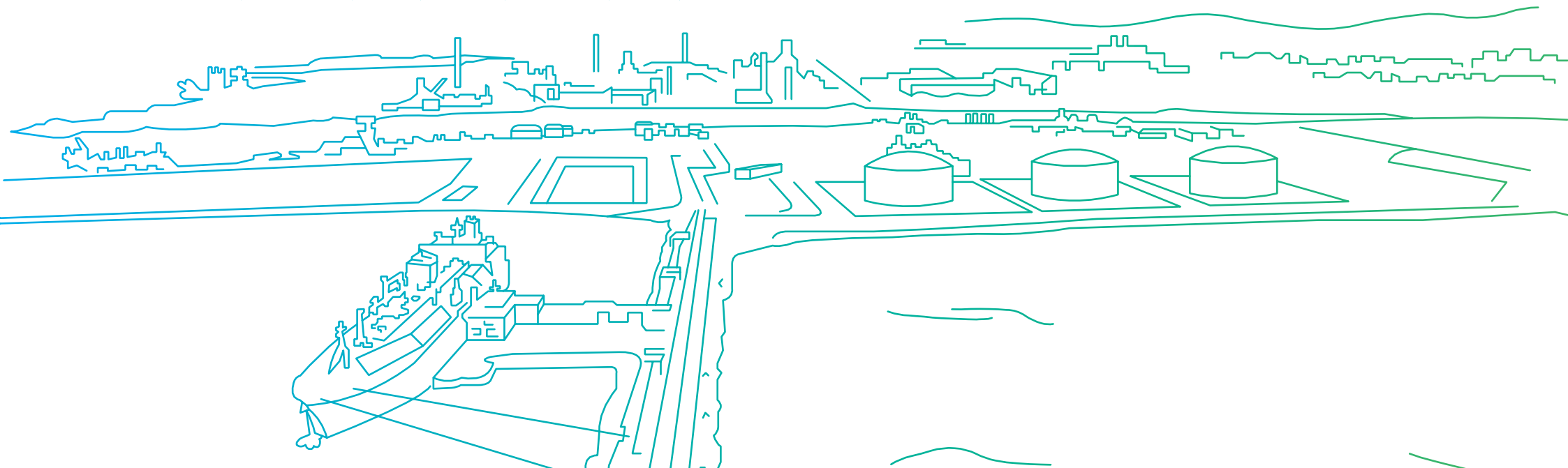
OPTIONS:

- Quarterly capacity = +0,10 €/MWh above 'Quantity term'
- Uniform send-out option (20 to 40 days) = 0,07 €/MWh
- Additional Monthly Storage Space = 1,00 €/MWh per month
- LNG Inventory trading = 500 €/month + 0,01 €/MWh

***SPOT:** cargoes unloaded during a given Month M, subscribed after the 20th of Month M-1

** **Pooling of intra-monthly capacity:** unloading of a standard cargo at Fos Cavaou, initially booked at Montoir-de-Bretagne

www.elengy.com • sales@elengy.com



Fos Tonkin

				SPOT*(last minute booking)		
	€	€/MWh	\$/MMBtu	€	€/MWh	\$/MMBtu
Unloading (Med-Max)	484 000	0,97	0,31	382 000	0,76	0,25
with POOLING from Fos Cavaou**	N/A			75 000	0,15	0,05
Truck Loading	636 €(2023) / loading					
Small Scale LNG carrier reloading	Non-regulated activity - quotation upon request					

Ship or Pay: 100% of the reservation.

Nota: Resulting terminalling tariffs excludes Gas Taken off, Port fees, Transmission network tariff (cf. GRTgaz).

Dollar price is indicative, based on:

- 1€ = 1,1 \$
- 1,00 €/MWh = approx. 0,32 \$/MMBtu

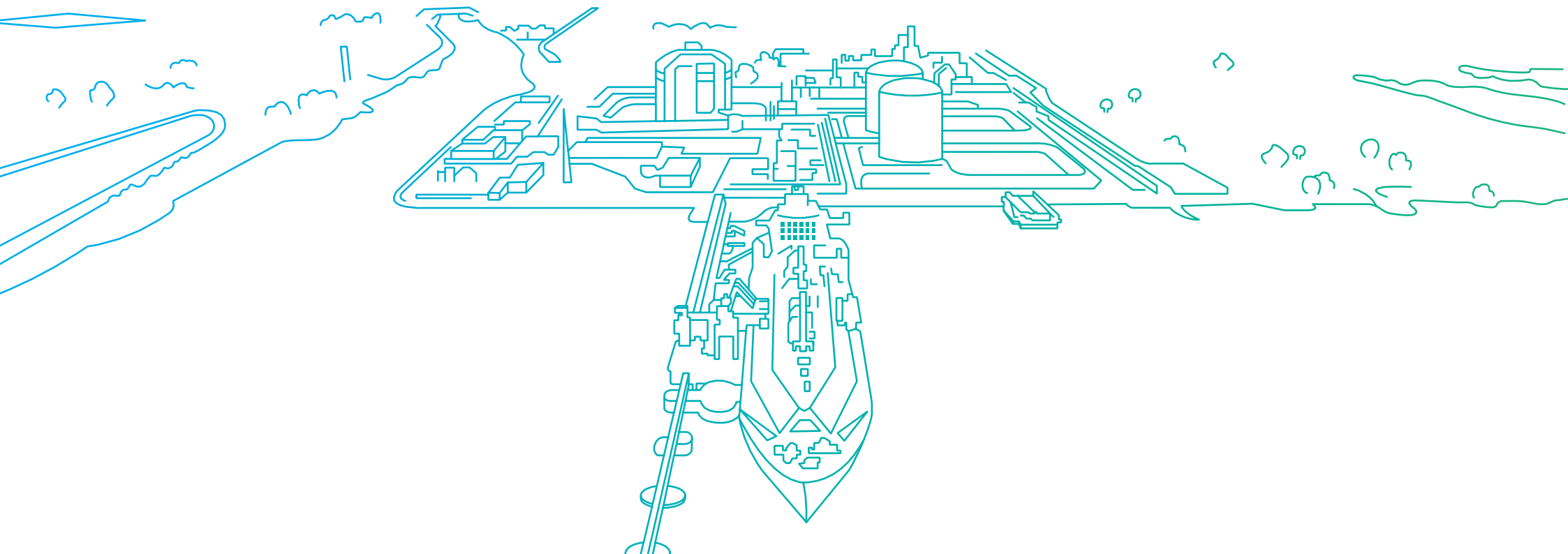
OPTIONS:

- Quarterly capacity = +0,10 €/MWh above 'Quantity term'
- LNG Inventory trading = 500 €/month + 0,01 €/MWh

***SPOT:** cargoes unloaded during a given Month M, subscribed after the 20th of Month M-1

** **Pooling of intra-monthly capacity:** unloading at Fos Tonkin, initially booked at Fos Cavaou (Med-Max)

www.elengy.com • sales@elengy.com



Montoir-de-Bretagne

				SPOT*(last minute booking)		
	€	€/MWh	\$/MMBtu	€	€/MWh	\$/MMBtu
Unloading (Med-Max)	365 500	0,73	0,24	296 500	0,59	0,19
Unloading (standard cargo)	641 000	0,64	0,21	503 000	0,50	0,16
with POOLING from Fos Cavaou**	N/A			90 000	0,09	0,03
Unloading (Q-Flex)	861 400	0,62	0,20	668 200	0,48	0,15
Unloading (Q-Max)	1 026 700	0,60	0,19	792 100	0,47	0,15
Ship Reloading (standard cargo)	493 000	0,49	0,16	N/A		
Truck Loading	636 €(2023) / loading					
LNG Transhipment (berth-to-berth)	Non-regulated activity - quotation upon request					

Ship or Pay: 100% of the reservation.

Nota: Resulting terminalling tariffs excludes Gas Taken off, Port fees, Transmission network tariff (cf. GRTgaz).

Dollar price is indicative, based on:

- 1€ = 1,1 \$
- 1,00 €/MWh = approx. 0,32 \$/MMBtu

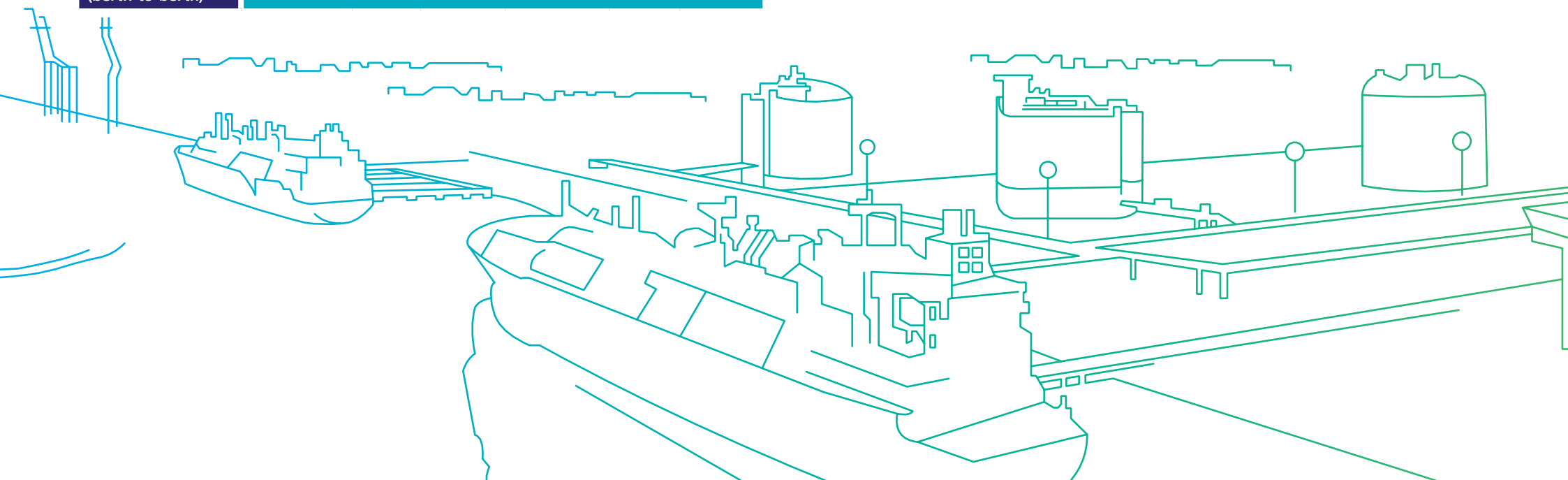
OPTIONS:

- Quarterly capacity = +0,10 €/MWh above 'Quantity term'
- Uniform send-out option (20 to 40 days) = 0,07 €/MWh
- Additional Monthly Storage Space = 1,00 €/MWh per month
- LNG Inventory trading = 500 €/month + 0,01 €/MWh

***SPOT:** cargoes unloaded during a given Month M, subscribed after the 20th of Month M-1

** **Pooling of intra-monthly capacity:** unloading of a standard cargo at Montoir-de-Bretagne, initially booked at Fos Cavaou

www.elengy.com • sales@elengy.com



BOOKED REGASIFICATION CAPACITIES GO WITH:

Direct Third Party Access:

Access on any term (short-term, long-term) for any quantity, from the 1st cargo, independently from other customers.

Time Flexibility:

LNG delivery reshaping: delivery date and quantity (+ vessel name, LNG quality) rescheduling (ADP, Monthly Program, Intra-Monthly re-scheduling)

- Intra annual make-up
- Weekly/daily send-out flexibility
- Within-Day renomination

Operational accessibility:

vessel, LNG quality

- Upstream diversity and easy nautical access
- Quality specifications complying with EASEEgas and among the widest in Europe

Zero send-out

at Montoir-de-Bretagne

Access to LNG hub services (subject to specific tariffs)

- LNG transshipment (berth-to-berth at Montoir, ship-to-ship at Fos Cavaou)
- LNG truck loading
- Gassing-up / Cooling down
- Small Scale LNG carrier reloading ...

Follow us on Twitter:
@Elengy



Data used for all calculations

Med-Max = 500 GWh (approx. 75 000 m3 LNG)

Standard cargo = 1 000 GWh (approx. 150 000 m3 LNG)

Q-Flex = 1 400 GWh (approx. 215 000 m3 LNG)

Q-Max = 1 700 GWh (approx. 260 000 m3 LNG)

1 € = 1,1 \$ • 1,00 €/MWh = approx. 0,32 \$/MMBtu

