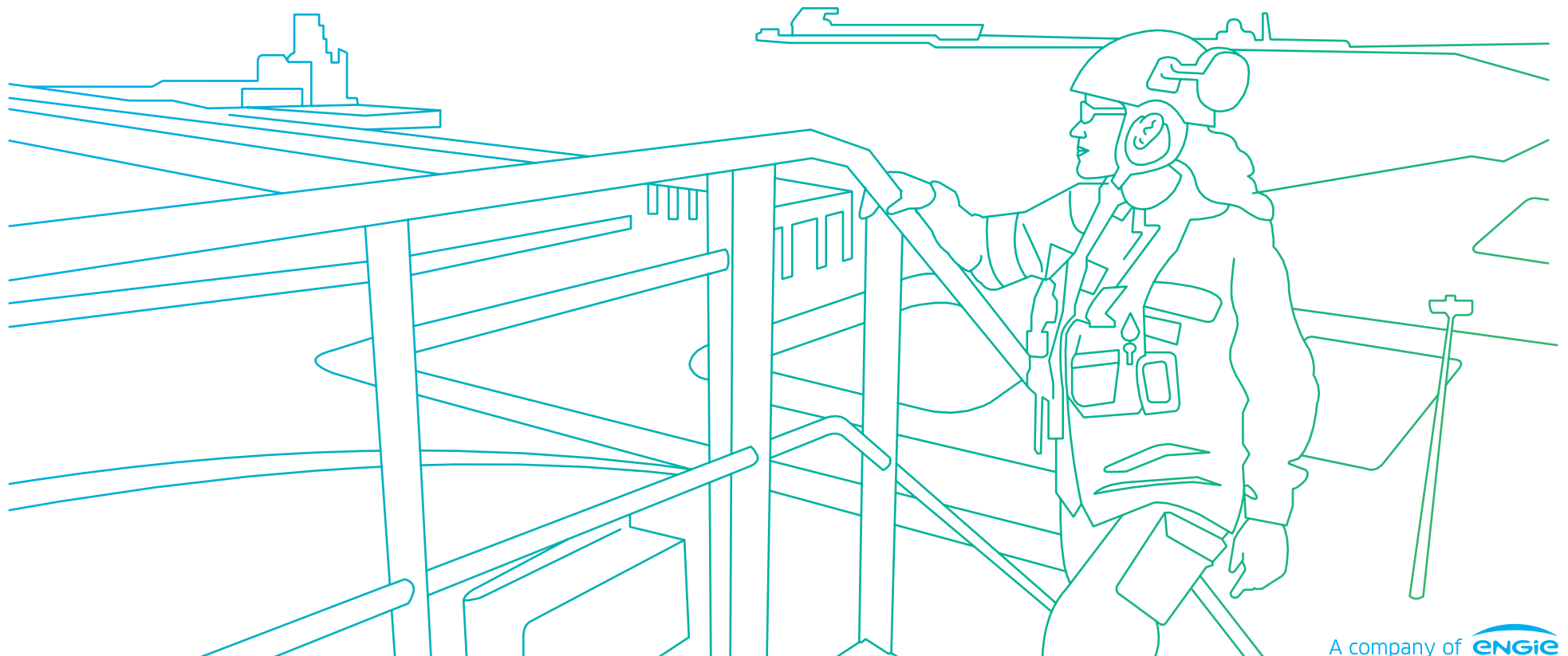


TARIFFS APPLICABLE AS OF APRIL 1st 2025

French regulated LNG terminals

Scheduling flexibility, competitive tariffs, access to both Mediterranean and Atlantic shores



Fos Cavaou

	SMART			SPOT*(last minute booking)		
	€	€/MWh	\$/MMBtu	€	€/MWh	\$/MMBtu
Unloading (Med-Max) <i>Energy variable term based on quantity effectively unloaded</i>	591 000 28 500	1,18	0,38	468 000 28 500	0,94	0,30
Unloading (standard cargo) <i>Energy variable term based on quantity effectively unloaded</i>	1 082 000 57 000	1,08	0,35	836 000 57 000	0,84	0,27
with POOLING from Montoir**	N/A			100 000	0,1	0,03
Unloading (Q-Flex) <i>Energy variable term based on quantity effectively unloaded</i>	1 474 800 79 800	1,05	0,34	1 130 400 79 800	0,81	0,26
Unloading (Q-Max) <i>Energy variable term based on quantity effectively unloaded</i>	1 769 400 96 900	1,04	0,33	1 351 200 96 900	0,79	0,25
Ship Reloading (standard cargo)	520 000	0,52	0,17	N/A		
Truck Loading	652,62 € (2025) / loading					
Small Scale LNG carrier reloading	Please ask for quotation					

Ship or Pay: 100% of Unloading or Reloading except Energy variable term.

Nota: Resulting terminalling tariffs excludes Gas Taken off, Port fees, Transmission network tariff (cf. NaTran).

Dollar price is indicative, based on:

- 1€ = 1,1 \$
- 1,00 €/MWh = approx. 0,32 \$/MMBtu



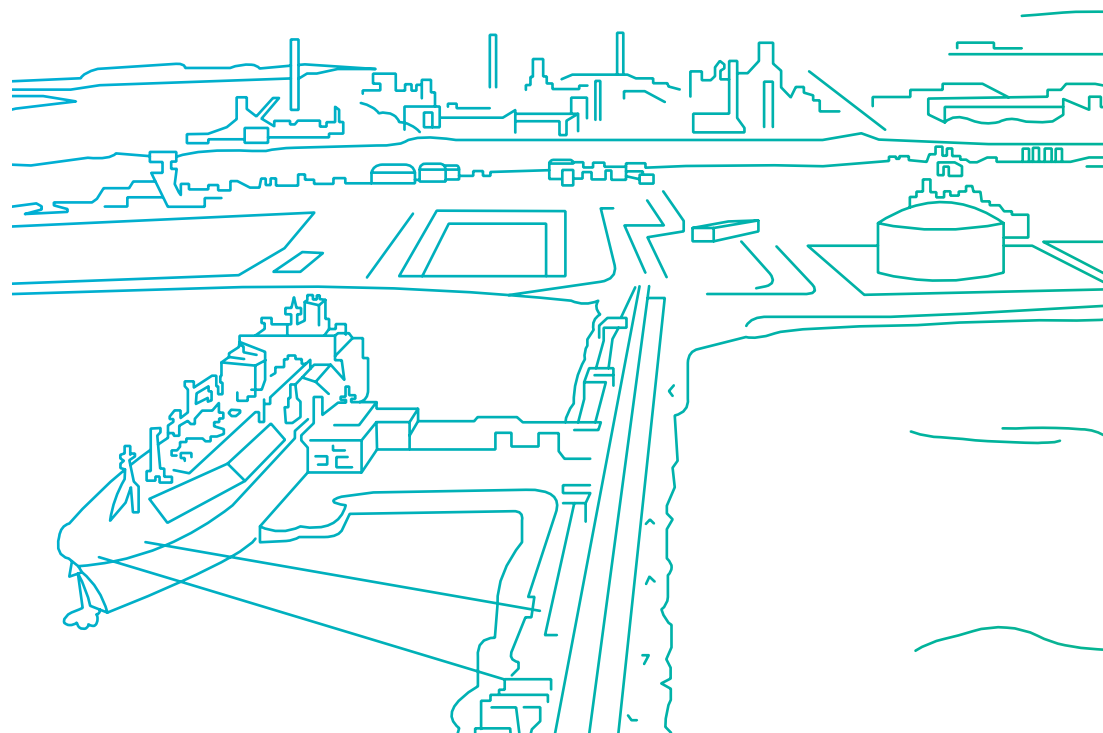
OPTIONS:

- Quarterly capacity = +0,10 €/MWh above 'Quantity term'
- Monthly Send-Out Option = 0,1 €/MWh
- Additional Monthly Storage Space = 1,00 €/MWh per month
- LNG Inventory trading = 500 €/month + 0,01 €/MWh

***SPOT:** cargoes unloaded during a given Month M, subscribed after the 20th of Month M-1

**** Pooling of intra-monthly capacity:** unloading of a standard cargo at Fos Cavaou, initially booked at Montoir-de-Bretagne

www.elengy.com • sales@elengy.com



Fos Tonkin

	SMART			SPOT*(last minute booking)		
	€	€/MWh	\$/MMBtu	€	€/MWh	\$/MMBtu
Unloading (Med-Max) <i>Energy variable term based on quantity effectively unloaded</i>	724 000	1,45	0,46	562 000	1,12	0,36
	30 500			30 500		
with POOLING from Fos Cavaou**	N/A			75 000	0,15	0,05
Truck Loading	652,62 € (2025) / loading					
Small Scale LNG carrier reloading	Please ask for quotation					

Ship or Pay: 100% of Unloading or Reloading except Energy variable term.

Nota: Resulting terminalling tariffs excludes Gas Taken off, Port fees, Transmission network tariff (cf. GRTgaz).

Dollar price is indicative, based on:

- 1€ = 1,1 \$
- 1,00 €/MWh = approx. 0,32 \$/MMBtu

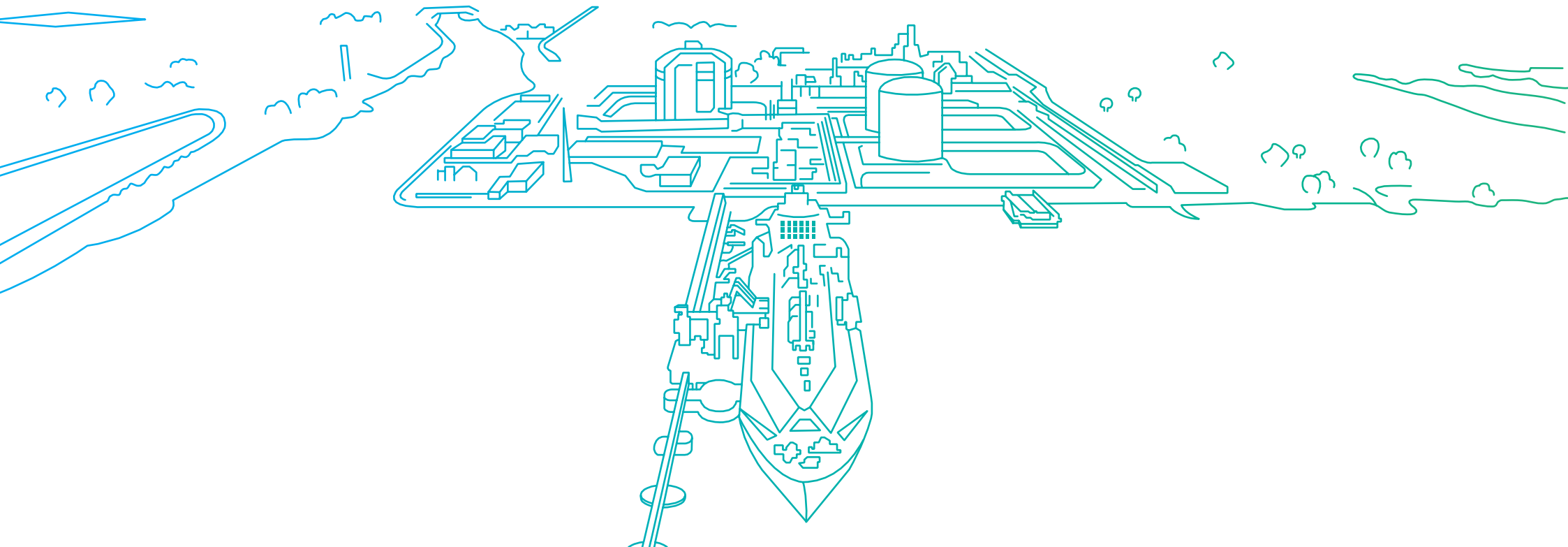
OPTIONS:

- Quarterly capacity = +0,10 €/MWh above 'Quantity term'
- LNG Inventory trading = 500 €/month + 0,01 €/MWh

***SPOT:** cargoes unloaded during a given Month M, subscribed after the 20th of Month M-1

**** Pooling of intra-monthly capacity:** unloading at Fos Tonkin, initially booked at Fos Cavaou (Med-Max)

www.elengy.com • sales@elengy.com



Montoir-de-Bretagne

	SMART			SPOT*(last minute booking)		
	€	€/MWh	\$/MMBtu	€	€/MWh	\$/MMBtu
Unloading (Med-Max) <i>Energy variable term based on quantity effectively unloaded</i>	531 000 26 500	1,06	0,34	421 000 26 500	0,84	0,27
Unloading (standard cargo) <i>Energy variable term based on quantity effectively unloaded</i>	972 000 53 000	0,97	0,31	752 000 53 000	0,75	0,24
with POOLING from Fos Cavaou**	N/A			90 000	0,09	0,03
Unloading (Q-Flex) <i>Energy variable term based on quantity effectively unloaded</i>	1 324 800 74 200	0,95	0,30	1 016 800 74 200	0,73	0,23
Unloading (Q-Max) <i>Energy variable term based on quantity effectively unloaded</i>	1 589 400 90 100	0,93	0,30	1 215 400 90 100	0,71	0,23
Ship Reloading (standard cargo)	500 000	0,50	0,16	N/A		
Truck Loading	652,62 € (2025) / loading					
LNG Transhipment (berth-to-berth)	Please ask for quotation					

Ship or Pay: 100% of Unloading or Reloading except Energy variable term.

Nota: Resulting terminalling tariffs excludes Gas Taken off, Port fees, Transmission network tariff (cf. GRTgaz).

Dollar price is indicative, based on:

- 1€ = 1,1 \$
- 1,00 €/MWh = approx. 0,32 \$/MMBtu



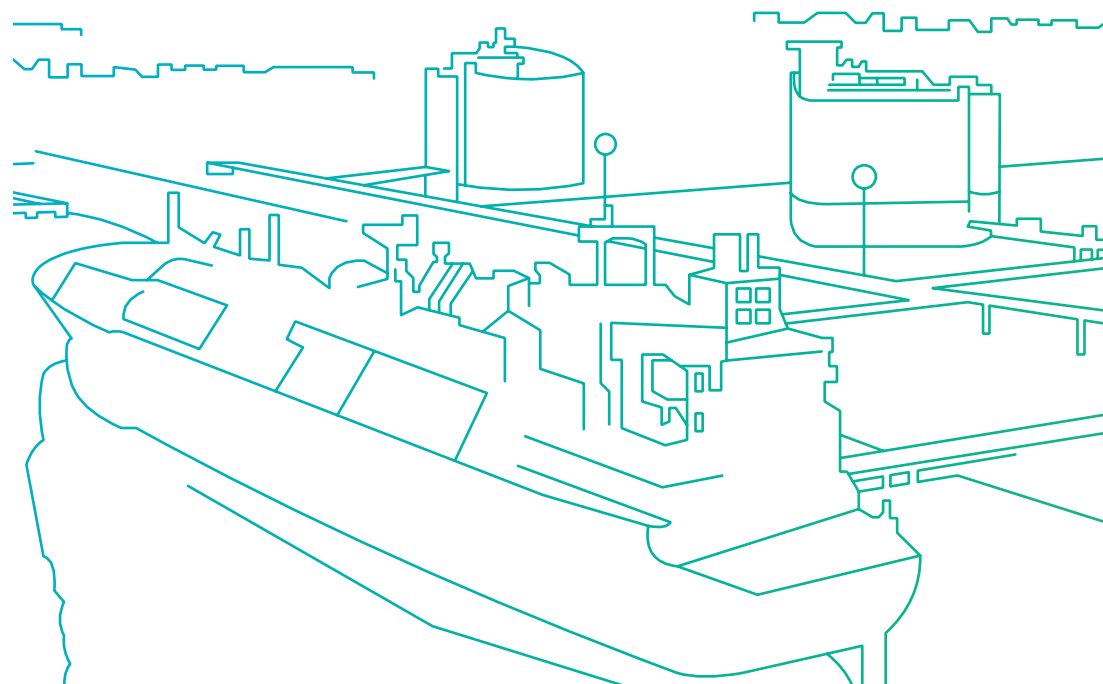
OPTIONS:

- Quarterly capacity = +0,10 €/MWh above 'Quantity term'
- Uniform send-out option (20 to 40 days) = 0,07 €/MWh
- Additional Monthly Storage Space = 1,00 €/MWh per month
- LNG Inventory trading = 500 €/month + 0,01 €/MWh

***SPOT:** cargoes unloaded during a given Month M, subscribed after the 20th of Month M-1

**** Pooling of intra-monthly capacity:** unloading of a standard cargo at Montoir-de-Bretagne, initially booked at Fos Cavaou

www.elengy.com • sales@elengy.com



BOOKED REGASIFICATION CAPACITIES GO WITH:

Direct Third Party Access:

Access on any term (short-term, long-term) for any quantity, from the 1st cargo, independently from other customers.

Time Flexibility:

LNG delivery reshaping: delivery date and quantity (+ vessel name, LNG quality) rescheduling (ADP, Monthly Program, Intra-Monthly re-scheduling)

- Intra annual make-up
- Weekly/daily send-out flexibility
- Within-Day renomination

Operational accessibility:

vessel, LNG quality

- Upstream diversity and easy nautical access
- Quality specifications complying with EASEEgas and among the widest in Europe

Zero send-out

at Montoir-de-Bretagne

Access to LNG hub services (subject to specific tariffs)

- LNG transshipment (berth-to-berth at Montoir, ship-to-ship at Fos Cavaou)
- LNG truck loading
- Gassing-up / Cooling down
- Small Scale LNG carrier reloading ...

Follow us on Twitter:
@Elengy



Data used for all calculations

Med-Max = 500 GWh (approx. 75 000 m³ LNG)

Standard cargo = 1 000 GWh (approx. 150 000 m³ LNG)

Q-Flex = 1 400 GWh (approx. 215 000 m³ LNG)

Q-Max = 1 700 GWh (approx. 260 000 m³ LNG)

1 € = 1,1 \$ • 1,00 €/MWh = approx. 0,32 \$/MMBtu

